

3402 657 Whiting Way, Coquitlam

\$719,000



Bosa built Lougheed Heights Tower 1. This 2 bed, 2 bath corner unit condo offers open concept living, floor to ceiling windows with gorgeous mountain & water views from your huge wrap around balcony. Beautiful sleek and modern kitchen boasting stainless steel appliances, built-in oven and gas cooktop, undermount sink and stone counters. Enjoys the stunning views from the 2 bedrooms. Excellent building amenities, over 17,000 sq ft including a movie theatre, Basketball court, Library, Two Music rooms, Business room, Outdoor Pool, fully equipped Gym, BBQ patio, Party room & Games room. Comes with parking & storage plus pets welcome. Easy walk to Skytrain, Lougheed Town Centre & shops of North Rd. Don't miss

KEY INFORMATION

MLS® R2532266

Residential Attached

Coquitlam West

2 Bedrooms

2 Bathrooms

758 SF

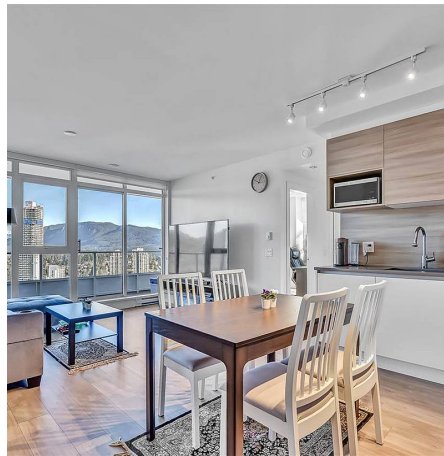
\$347.01 Maintenance Fees

FEATURES

Year Built: 2020

Views: Mountain, City and River View

Listed By: Sutton Group - 1st West Realty



rennie