

333 4905 Spearhead Place, Whistler

\$1,588,000



Famous, most sought-after ski-in-ski-out 2-bed 2-bath, with lock-off suite, Greystone Lodge. One of the three closest to the Upper Village condos in the Benchlands. Super location. Ski time to Blackcomb Gondola and Magic Chair, 1-minute, for kids 2-minutes. Turn-key furnished. Quiet mountain setting. Heated outdoor pool, hot tub, ski & bike storage, free secure underground parking. Lost Lake, Chateau Golf Course, 5-Star hotels, shops, pubs and restaurants, within walking distance. Zoned for nightly rentals, lock-off adds flexibility when renting, or rent long-term, or live full-time. Last sale was on the market 3-days, this suite will not last.

KEY INFORMATION

MLS® R2532261

Residential Attached

Benchlands

2 Bedrooms

2 Bathrooms

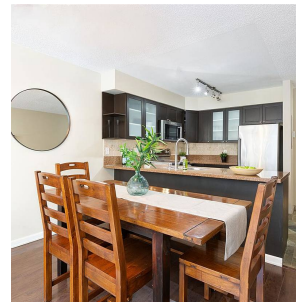
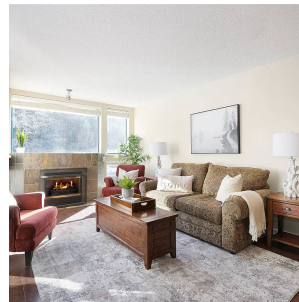
1,114 SF

\$754.01 Maintenance Fees

FEATURES

Year Built: 1989

Listed By: RE/MAX Sea to Sky Real Estate



rennie