

3306 5119 Garden City Road, Richmond

\$765,000



POLYGON LION'S Park SW Facing large corner unit with 3 bedroom and 2 baths in center of Richmond area. Facing QUIET side ! Almost 1200 Sqft on the 3rd Floor of this building, wide open view without blocking from other buildings. Well kept good layout unit with spacious Master Bedroom, Stainless steel appliances. Large size Living Room & joint Dinning Room with NEW laminate wood floor. Next to T&T Supermarket, Lansdowne shopping Centre, Kwantlen University; Walking 5-8 minutes to Sky train station and bus transportation. Complex with outdoor swimming pool, GYM, Pool Table, Guest room etc. Book for a private showing.

KEY INFORMATION

MLS® R2525760

Residential Attached

Brighthouse

3 Bedrooms

2 Bathrooms

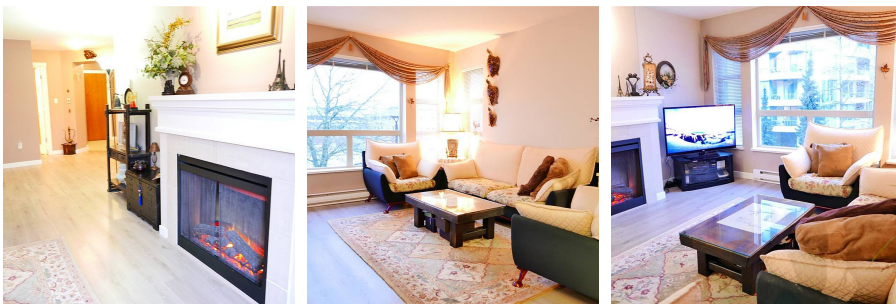
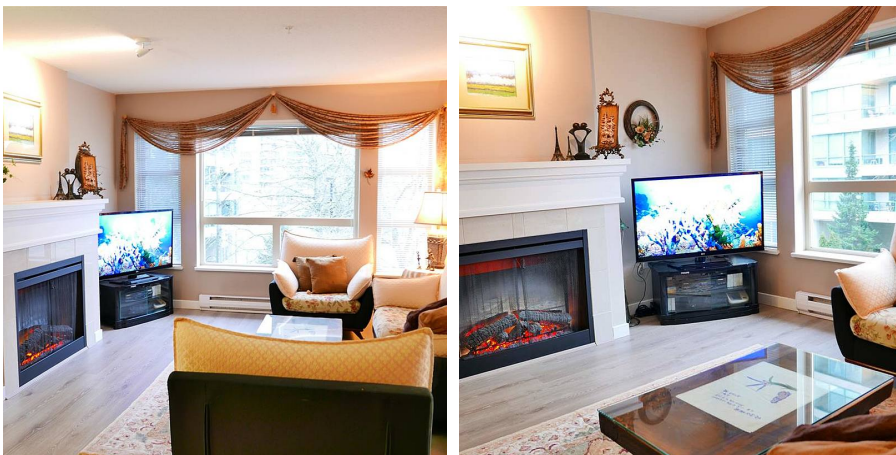
1,192 SF

\$438.97 Maintenance Fees

FEATURES

Year Built: 2005

Listed By: Multiple Realty Ltd.



rennie