

Ph21 5288 Grimmer Street, Burnaby

\$620,000



Quiet Penthouse in the center of the city, walking distance to Sky-train station, Metro town shipping center, Parks. 2-Bedrooms, 2-Bathrooms, South facing penthouse, 9" high ceiling with a balcony. Spacious and bright living space, 828 square feet penthouse, Features elegant bath rooms; contemporary kitchen with stainless steel appliances; Granite counter-tops. Secured parking stall; storage locker. Very good location, near Royal Oak Sky-train Station, and bus stop. Close to Metrotown shipping center, Crystal Mall, Bonsor Park Close to Marlborough Elementary school.

KEY INFORMATION

MLS® R2524597

Residential Attached

Metrotown

2 Bedrooms

2 Bathrooms

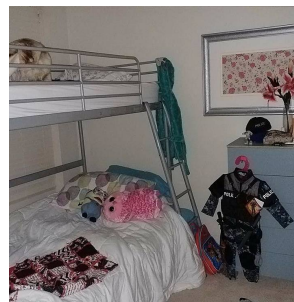
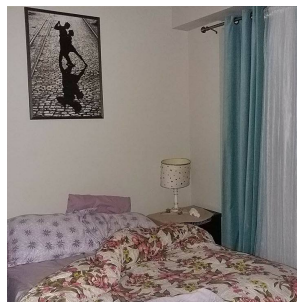
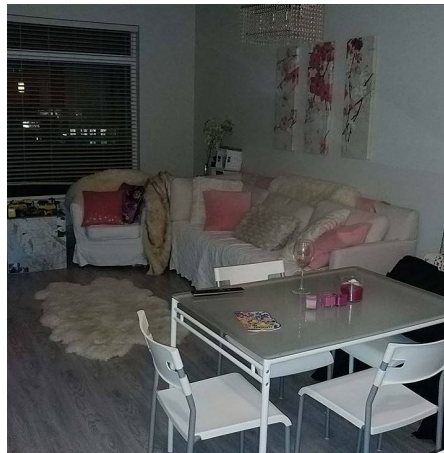
828 SF

\$402.55 Maintenance Fees

FEATURES

Year Built: 2015

Listed By: Royal Pacific Realty (Kingsway) Ltd.



rennie