

3309 5119 Garden City Road, Richmond

\$649,000



BUILT BY POLYGON. THIS BRIGHT LARGE UPPER FLOOR CORNER UNIT (991 SQ.FT.) IS FACING SOUTH EAST ON THE QUIET SIDE OF LIONS PARK NEAR WALMART, LANDSDOWNE SHOPPING MALL, KWANTLEN UNIVERSITY AND SKYTRAIN STATION. THE LIVING ROOM AND NOOK ARE LOOKING AT CITY OF RICHMOND PARKLAND. MAINTENANCE FEES INCLUDE GAS, GARDENING, AMENITIES, OUTDOOR SWIMMING POOL, RECREATION CENTER, GYM, GUEST SUITE, ETC.

KEY INFORMATION

MLS® R2523764

Residential Attached

Brighthouse

2 Bedrooms

2 Bathrooms

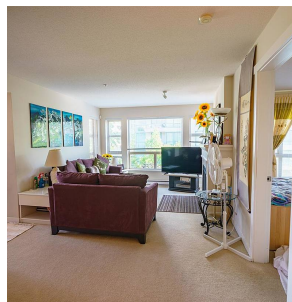
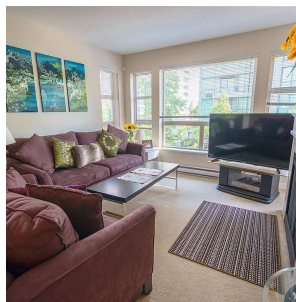
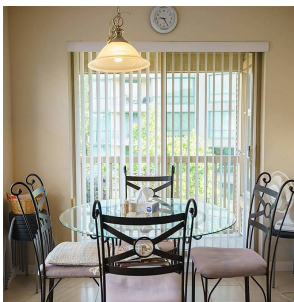
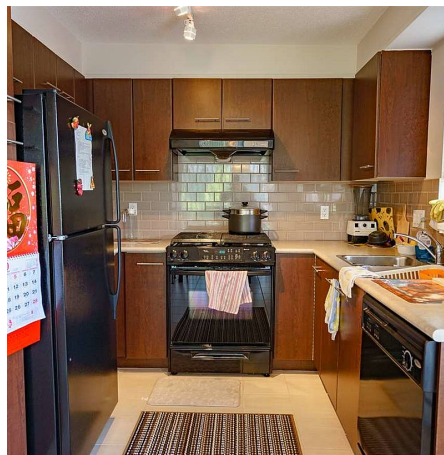
991 SF

\$363.83 Maintenance Fees

FEATURES

Year Built: 2005

Listed By: Park Georgia Realty Ltd.



rennie