

310 9688 148 Street, Surrey

\$410,000



Very spacious 1160 sq. ft., 2 bdrm + den, 2 bath, apartment in central location close to transportation, schools and all amenities and in complex w/extensive common recreation facilities including: outdoor pool, hot tub, clubhouse (which can be rented for parties), exercise room, 4 guest suites, secure underground parking and more. Enter this unit to foyer w/vinyl plank flooring. Entertaining is easy in the liv rm w/cozy gas f/p & door to balcony & dining area. Den for your home office or computer needs. Spacious kitchen w/ updated cabinet doors. 2 spacious bdrms including mbdrm w/walk through closet & 4 pce ensuite. Second bdrm w/dr to balcony. 4 piece main bath. 1 parking stall and locker.

KEY INFORMATION

MLS® R2513479

Residential Attached

Guildford

2 Bedrooms

2 Bathrooms

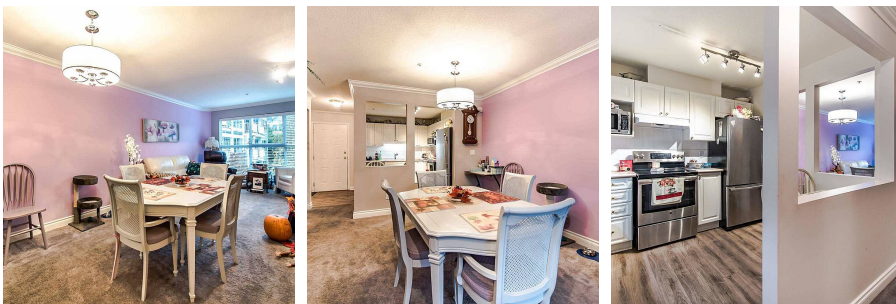
1,160 SF

\$529.41 Maintenance Fees

FEATURES

Year Built: 1994

Listed By: Performance Power Play Realty



rennie