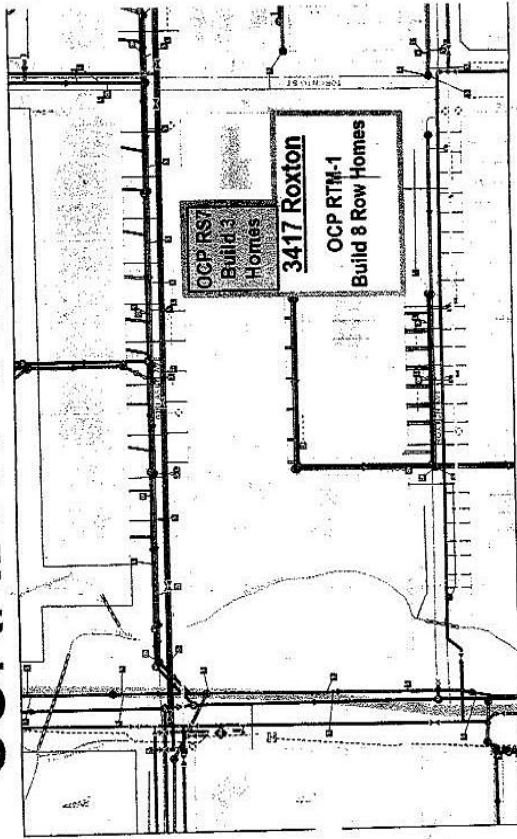


3417 Roxton Avenue, Coquitlam

\$4,588,000

CURRENT UTILITIES



→ Water Utility

→ Drainage Utility

→ Sanitary Utility

Attention investors and Builders. Lot is on Burke Mountain prime location beside Coast Meridian Road and just below David. Build up to 8 row homes (RTM-1) and 3 houses (RS-7).

Approximately 3/4 of the lots is for sale, owner is keeping the portion of the lot where house is. One of a kind left on a quiet street. Similar lots beside and across the street are already rezoned, built and sold. Leigh park and school adjacent.

KEY INFORMATION

MLS® R2509053

Land Only

Burke Mountain

o Bedrooms

o Bathrooms

o SF

48,116 SF Lot

FEATURES

Listed By: Oneflatfee.ca