

Ph2 285 E 10th Avenue, Vancouver

\$1,589,000



RARE TWO LEVEL PENTHOUSE in the heart of Mount Pleasant, centrally located near transit, shopping and entertainment! This PH boasts floor to ceiling windows with expansive 12 foot slider doors, balconies off both levels with over 320 SF of outdoor space and showcasing plenty of windows to enjoy your panoramic Water and Mountain views! High performance European inspired stainless steel appliances, custom Italian cabinetry, hardwood flooring throughout, spa inspired bathrooms, closet organizers, and BONUS - AIR CONDITIONING. Amenities include a fitness centre, guest suite, entertainment lounge, BBQ/ lounge space, rooftop garden, and games room.TWO PARKING + Storage. Call for a Private Tour!

KEY INFORMATION

MLS® R2500523

Residential Attached

Mount Pleasant

2 Bedrooms

2 Bathrooms

1,183 SF

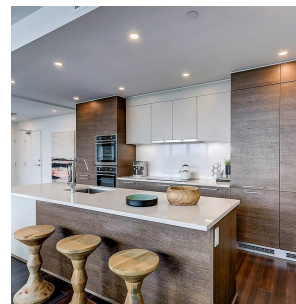
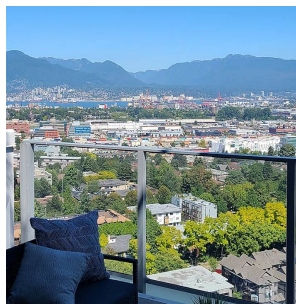
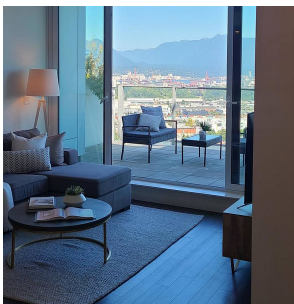
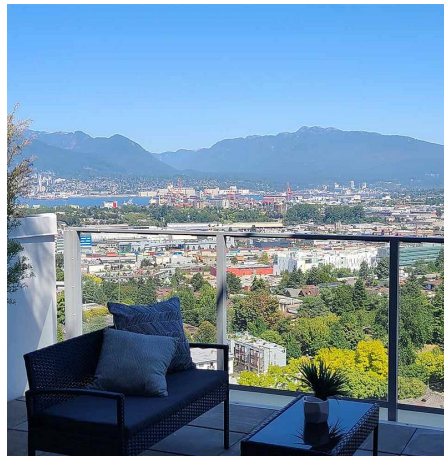
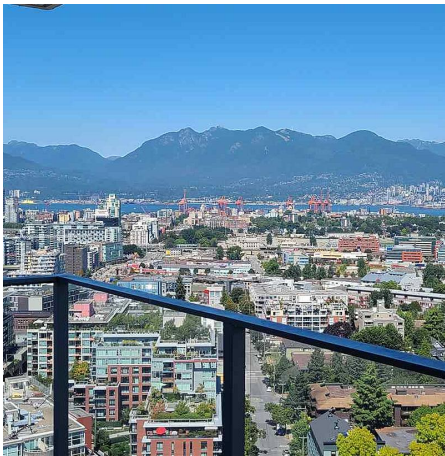
\$489.36 Maintenance Fees

FEATURES

Year Built: 2019

Views: MOUNTAINS & WATER

Listed By: rennie & associates realty ltd.



Jessica Lozada PREC*
604.360.0025
jlozada@rennie.com
rennie.com/jessicalozada

rennie