

# 378 Hospital Street, New Westminster

\$1,745,999



Potential to Subdivide into Duplex lot(Subject to City of New West Minster Approval)" Must Verify" 3 Storey home situated in Sapperton most desirable and convenient location of New Westminster.Next to Richard Mcbride Elementary School,Walking Distance to Royal Columbian Hospital,Sapperton Skytrain Station,HWY 1 and Major Shopping Centers.This home features 3 levels with 3 kitchens,3 Living Rooms,3 Dining rooms and 6 Bedrooms.Each level has 2 bedrooms,Kitchen,Living,dinning and full Washroom.Very Suitable for first timers,investors or developer Can generate Great Rental Income.8660 sqft corner lot with 3304 covered area of house.A GREAT BUY.....

## KEY INFORMATION

MLS® R2497243

Residential Detached

Sapperton

6 Bedrooms

3 Bathrooms

3,304 SF

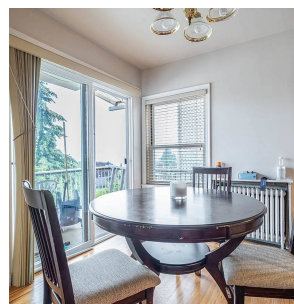
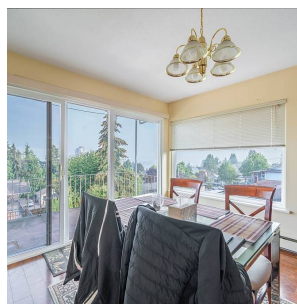
8,660 SF Lot

## FEATURES

Year Built: 1946

Views: Fraser River

Listed By: Century 21 Coastal Realty Ltd.



rennie