

2601 428 Beach Crescent, Vancouver

\$3,680,000



"Luxurious King's Landing." Front SE facing suite with fabulous water and skyline views. KL is known for interior detailing, including crown mouldings, cherrywood cabinets, marble flooring, gourmet appliances (Sub zero fridge, large micro, Viking gas range, Fisher Paykel D/W, Viking wine fridge), and detailed granite edging. The ensuite is spa like w/soaker tub and heated floor. Upgraded custom window coverings throughout plus a large private garage w/storage, deep freezer, file cabinets, workshop area!! Two gas outlets on balcony. Great floor plan and the best private club in the city. Roll your kayak, cycle or inline skate from your private garage directly to Vancouver's famous seawall.

KEY INFORMATION

MLS® R2496986

Residential Attached

Yaletown

2 Bedrooms

3 Bathrooms

1,650 SF

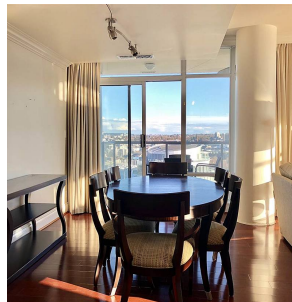
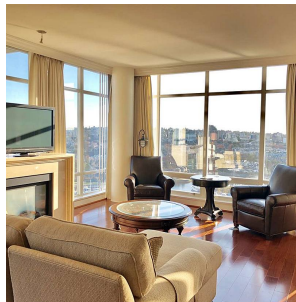
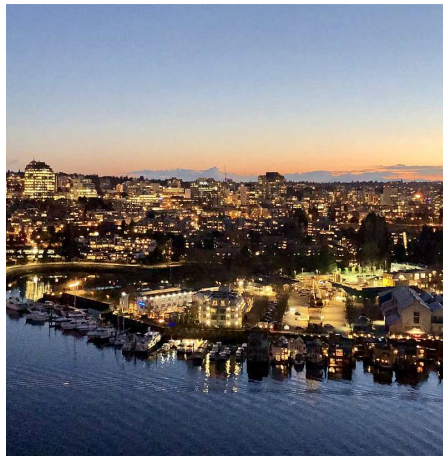
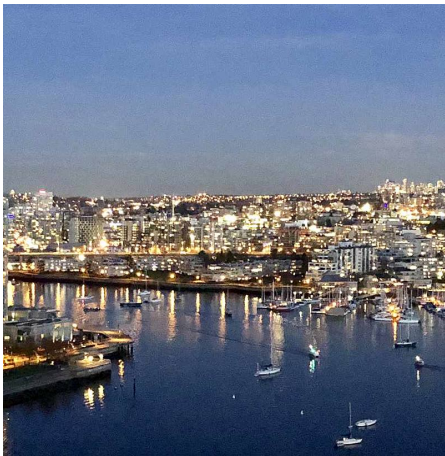
\$1,223.00 Maintenance Fees

FEATURES

Year Built: 2005

Views: WATER, CITY, MARINA & PARK

Listed By: Royal Pacific Riverside Realty Ltd.



rennie