

2501 258 Nelson's Crescent, New Westminster

\$1,198,000



Welcome to The Columbia in the beautiful Brewery District. This brand new 3 bedroom, 2 bathroom SUB PENTHOUSE is steps away from all your essential needs. Featuring open concept spacious living and dining area, A/C units, 2 full bathrooms, a gas stove, quartz countertops, laminate floors and an amazing UNOBSTRUCTED view of the water and surrounding area. This unit also comes with TWO side by side parking stalls as well as TWO side by side storage lockers. Excellent for commuters, this home is located minutes away from transit at Sapperton Station, as well as a quick drive to Lougheed Hwy and Highway 1. Open House by appointment only Saturday September 19, 12:00pm - 2:00pm.

KEY INFORMATION

MLS® R2495757

Residential Attached

Sapperton

3 Bedrooms

2 Bathrooms

1,404 SF

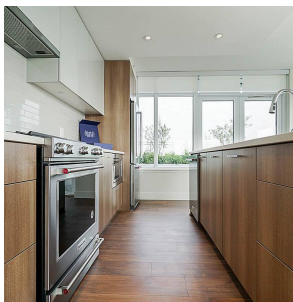
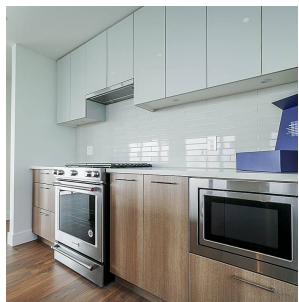
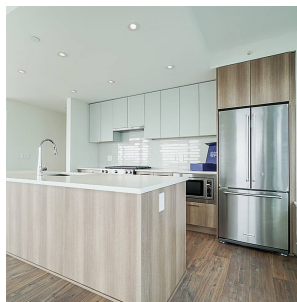
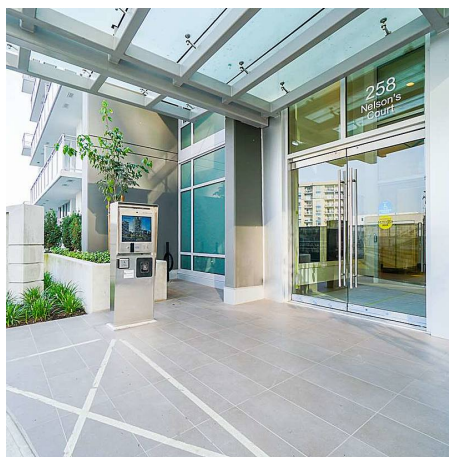
\$791.00 Maintenance Fees

FEATURES

Year Built: 2020

Views: .

Listed By: TRG The Residential Group Realty



rennie