

Ph02 258 Nelson's Court, New Westminster

\$1,249,900



The Columbia is the latest addition to Brewery District, an established walk-to-everything community located on rapid transit. This spacious 2 BDRM+Den, 2 bath PH home offers 1,315 SQFT of living space plus 2 over-sized balconies with 885 SQFT of outdoor space. Stunning river & mountain views, w/ windows facing North & East. This home features open layouts w/ quality finishes incl Quartz counter tops, Kohler faucets & KitchenAid appliances-gas convention range & french door refrigerator. Add'l features include in-suite air conditioning, spacious bdrms, a large walk-in closet and ensuite dual sinks bath and large shower as well as its very own hot tub. It also includes access to 10,000+ SQFT of private indoor amenities. By appt only.

KEY INFORMATION

MLS® R2483517

Residential Attached

Sapperton

2 Bedrooms

2 Bathrooms

1,315 SF

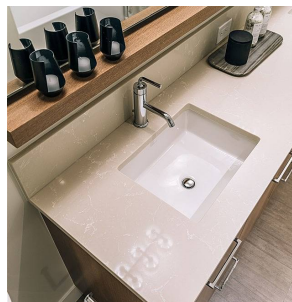
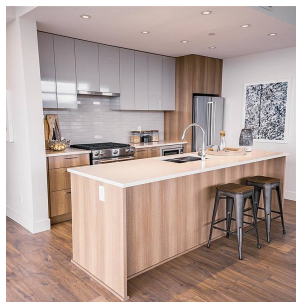
\$736.24 Maintenance Fees

FEATURES

Year Built: 2020

Views: RIVER AND MOUNTAIN VIEW

Listed By: Wesgroup Realty Ltd.



rennie