

# 201 12148 224 Street, Maple Ridge

\$439,900



55+ Panorama ECRA building with concrete and steel construction. PLUS Senior centre on the main floor offering meals, billiards, hair salon, bridge, bingo, dance classes, crafts and a coffee shop. This 2 bed, 2 bath corner unit is southwest facing and gets plenty of sunshine with its many windows, a screened balcony and bright solarium off your spacious kitchen. Your living room and dining room have plenty of room for your full size furniture and boasts a gas fireplace. In suite laundry and all appliances included. Maintenance fee includes hot water & gas and all suites are pre-wired for medic alert while all hallways are wheelchair and scooter friendly. Pets welcome with restrictions, No rentals allowed. Close to everything.

## KEY INFORMATION

MLS® R2483055

Residential Attached

East Central Maple Ridge

2 Bedrooms

2 Bathrooms

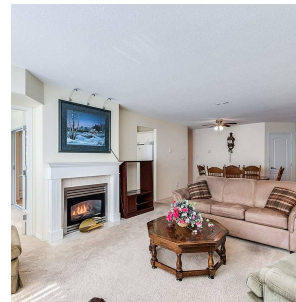
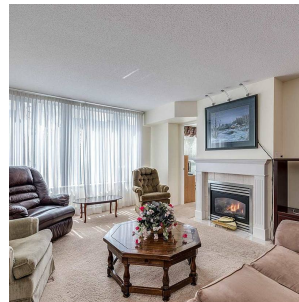
1,325 SF

\$387.25 Maintenance Fees

## FEATURES

Year Built: 1998

Listed By: RE/MAX Lifestyles Realty



rennie