

# 1502 8131 Nunavut Lane, Vancouver

\$829,000



MC2 corner unit. 270 degrees STUNNING VIEW OF CITY, NORTH SHORE, MOUNTAIN and beyond. Open layout with floor-ceiling windows. Modern kitchen with sleek European cabinetry, integrated Blomberg appliances and quartz counters. Real Terra Wood flooring in your living & dining room & a JAGA air cooling system. Steps to Skytrain Station, T&T supermarket, shopping centre, restaurants, theater and bank. Don't miss out!

## KEY INFORMATION

MLS® R2476003

Residential Attached

Marpole

2 Bedrooms

2 Bathrooms

780 SF

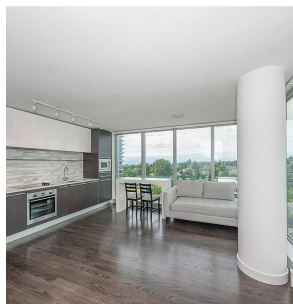
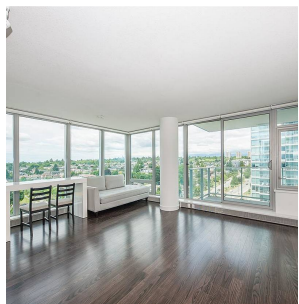
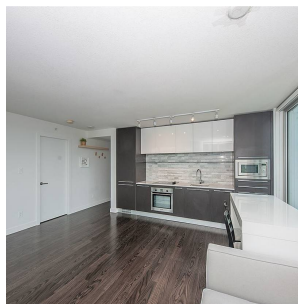
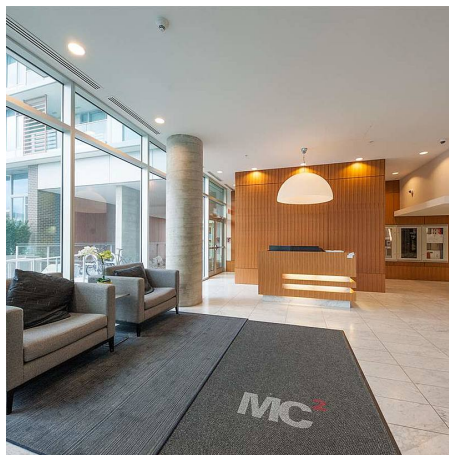
\$604.00 Maintenance Fees

## FEATURES

Year Built: 2016

Views: PARK, NORTH SHORE MT

Listed By: Nu Stream Realty Inc.



rennie