

28555 123 Avenue, Maple Ridge

\$1,599,900



If you are looking for privacy, quiet and space - this is the property for you. This semi custom home with Double Garage sits on 5.29 Acres is located between Maple Ridge and Mission. Owner's are not only enjoying their free time but also generating good revenue from Poultry, Sheep, Goat, & Veg. garden. Multiple buildings to protect birds /animals. Home features Spacious modern kitchen open to a family room. The formal living room adjacent to a nice sized dining room comes with a gas fireplace, bedroom with bath on the main floor, Upstairs features 3 bedrooms and a huge recreation room, master bedroom, with en-suite and a sliders to a nice balcony, main bath has a jetted tub. Many updates inc. landscaping, Multiple Fruit trees, fully fenced, individual gated complex etc with Koi ponds.

KEY INFORMATION

MLS® R2473981

Residential Detached

Northeast Maple Ridge

4 Bedrooms

3 Bathrooms

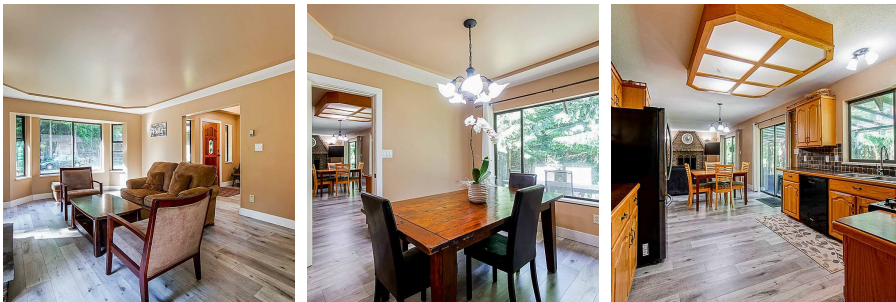
3,260 SF

FEATURES

Year Built: 1992

Views: FOREST

Listed By: Planet Group Realty Inc.



rennie