

4207 1188 Pinetree Way, Coquitlam

\$979,000



2 bed+den sub-penthouse located at Coquitlam's tallest M3 building. Spacious & efficient floor plan designed around the famous CresseyKitchen - double built-in fridges, quartz counter top, integrated Blomberg appliances & Fulgor Milano 5 burner gas cooktop, built in oven & microwave, pull-out cabinet and built in wine cooler. Sunny SouthEast facing offers unobstructed view. Unit comes with air conditioning for luxury comfort! Fantastic access to balcony off the kitchen for summer time entertaining. Wide-plank laminate flooring throughout, tile in bathrooms, & floor heating in master ensuite. Steps to Evergreen Line, Coquitlam Center, restaurants, aquatic centre, Lafarge Lake, & more. Enjoy access to amenities on 47&48 floors. Pets & Rental welcome. Comes with 1 parking & 1 locker.

KEY INFORMATION

MLS® R2475228

Residential Attached

North Coquitlam

2 Bedrooms

2 Bathrooms

991 SF

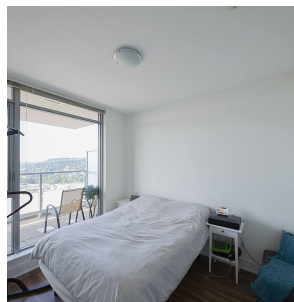
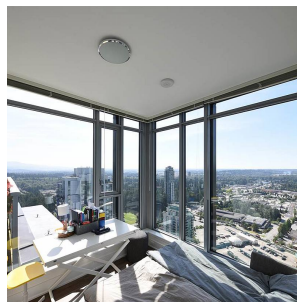
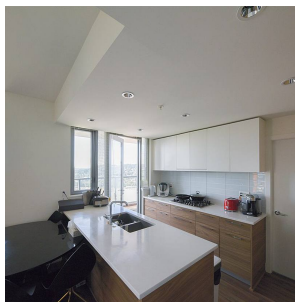
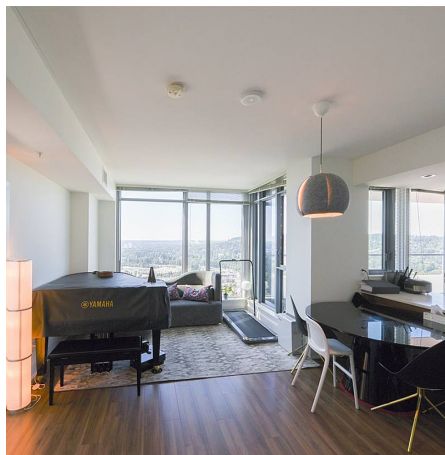
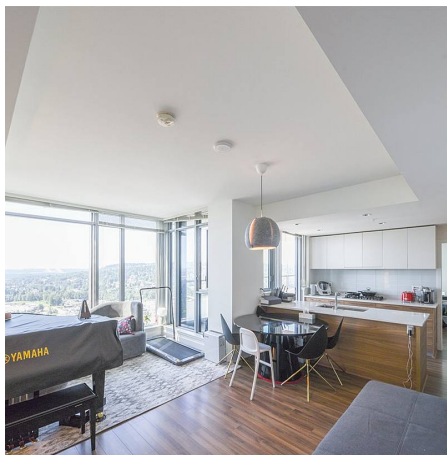
\$342.28 Maintenance Fees

FEATURES

Year Built: 2016

Views: CITY

Listed By: Sutton Group - 1st West Realty



rennie