

502 1485 Duchess Avenue, West Vancouver

\$819,000



Bring your full sized furniture, this bright and spacious unit features 1163 square feet of well-planned space, 2 bedrooms including a large primary and in suite laundry. North West corner unit that offers lots of light, plenty of windows, and partial water views. Boutique concrete building in the heart of Ambleside and a short walk to John Lawson Park, the Seawall, Ambleside Park, Park Royal and Dundarave. 2 parking stalls and storage locker.

KEY INFORMATION

MLS® R2474309

Residential Attached

Ambleside

2 Bedrooms

2 Bathrooms

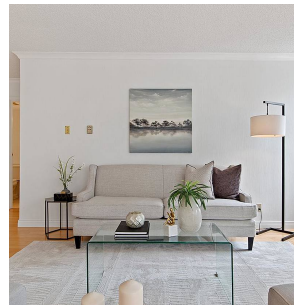
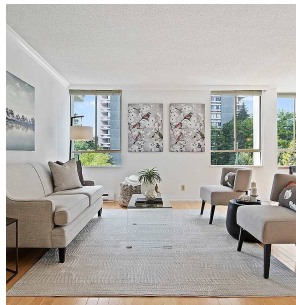
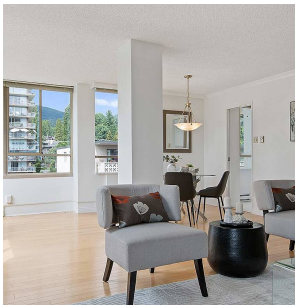
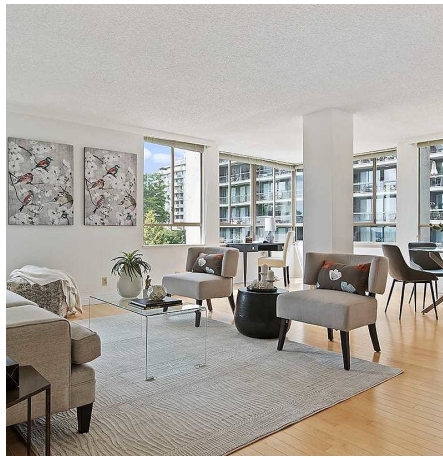
1,163 SF

\$514.20 Maintenance Fees

FEATURES

Year Built: 1981

Listed By: Stilhavn Real Estate Services



rennie