

404 14968 101a Avenue, Surrey

\$518,800



Easy to Show. Best Unit in Guildhouse by Mosaic. 1 YR Like NEW 2 bedrooms TOP Floor CORNER UNIT, open concept, 10' high ceiling, open kitchen with quartz counter top, and contemporary cabinetry. 807 sq ft of beautiful living space. South facing with Parking & locker included and just steps away from Guildford Town Centre, transit, schools and close to Hwy 1, making this the perfect location.

KEY INFORMATION

MLS® R2470514

Residential Attached

Guildford

2 Bedrooms

2 Bathrooms

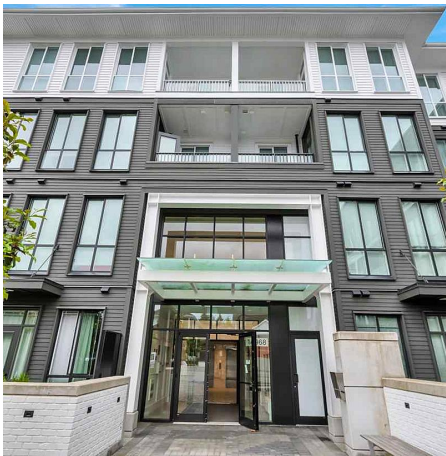
807 SF

\$322.00 Maintenance Fees

FEATURES

Year Built: 2019

Listed By: Hugh & McKinnon Realty Ltd.



rennie