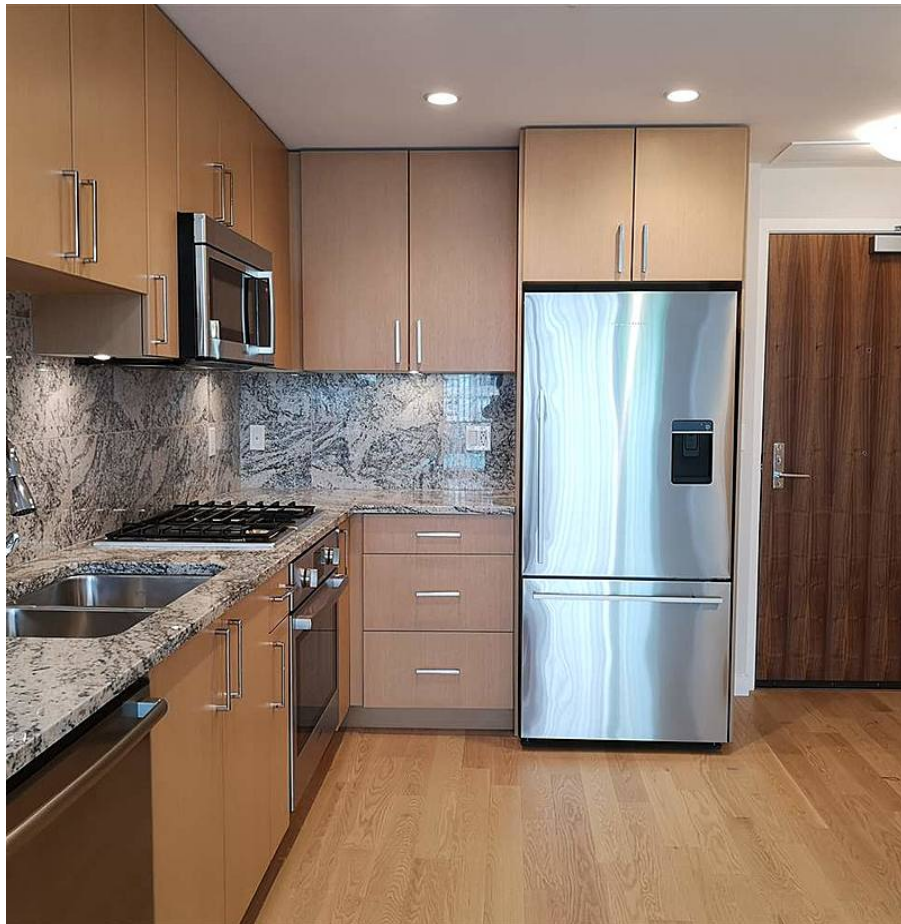


601 1708 Ontario Street, Vancouver

\$749,900



Brand new East-facing one bedroom plus flex home at Pinnacle on the Park. Fantastic spacious floor plan with semi-ensuite and walk through closet. Unit features Patio to rooftop garden & bbq. Well equipped with full size appliances, heat pump for heating and cooling, engineered wood flooring in living areas. Superb location at the heart of False Creek, near technology and game development hub, minutes to the sea wall, parks and Transit. Comes with one parking and a bike storage cage.

KEY INFORMATION

MLS® R2471702

Residential Attached

Mount Pleasant

1 Bedroom

1 Bathroom

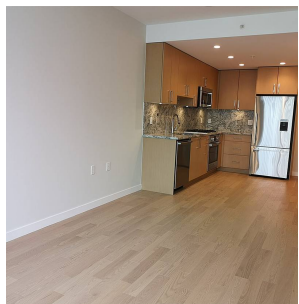
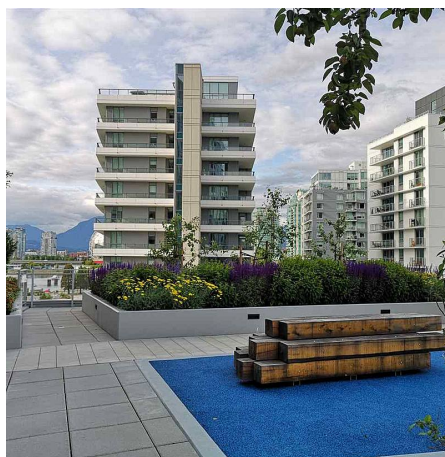
610 SF

\$229.21 Maintenance Fees

FEATURES

Year Built: 2019

Listed By: Anson Realty Ltd.



rennie