

1501 2221 E 30th Avenue, Vancouver

\$839,000



Panoramic views of Northshore mountains and city landscape! 2-bedroom plus den upper unit with high end finishing by world renowned developer Westbank. Centrally located on Kingsway and Victoria area, with an easy commute to Downtown, Metrotown and Richmond. Only an elevator ride away from T&T Supermarket, banks, restaurants and many other retailers. This unit is equipped with central heating and A/C for year-round comfort. Deluxe stainless steel kitchen appliances including Miele gas stove and oven, as well as Blomberg dishwasher, laundry, and fridge. Building has 5 stars amenities including heated outdoor pool, hot tub, BBQ area, gym, theatre room, meeting room and billiards table. Pets friendly and rentals allowed. 1 parking stall included. Book your appointment today.

KEY INFORMATION

MLS® R2470848

Residential Attached

Victoria

2 Bedrooms

2 Bathrooms

849 SF

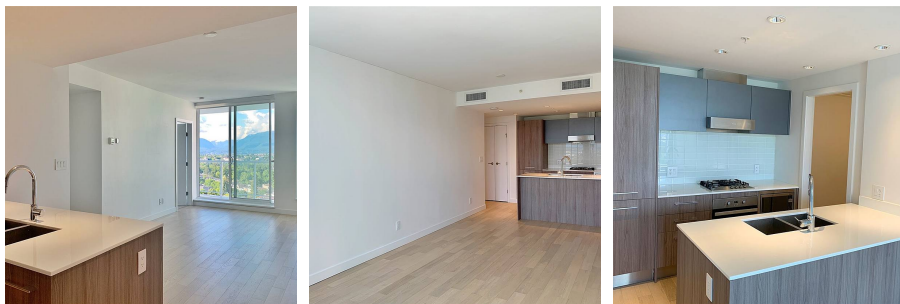
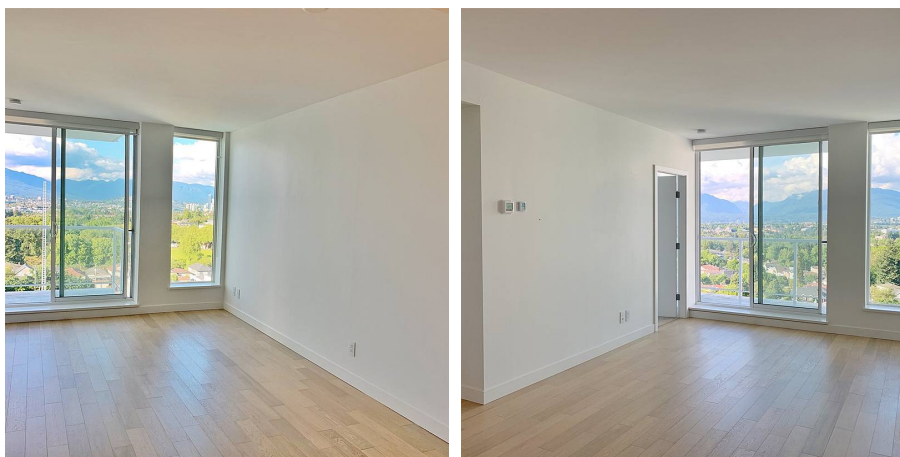
\$653.22 Maintenance Fees

FEATURES

Year Built: 2018

Views: Panoramic city & mountain

Listed By: Royal Pacific Realty (Kingsway) Ltd.



rennie