

1607 4465 Juneau Street, Burnaby

\$998,000



A thoughtfully planned 2 bedroom, 2 bathroom home with an open plan kitchen & living space with access to the large balcony. Enjoy seamless integrated appliances & ample space for entertaining in the kitchen that flows into the spacious living area. Retreat to your master suite tucked away from the second bedroom, complete with a walk-through closet, featuring built-in millwork & a beautiful ensuite. This air conditioned residence offers insuite laundry, 1 parking stall, 1 storage locker & access to resident only amenities.

KEY INFORMATION

MLS® R2470505

Residential Attached

Brentwood Park

2 Bedrooms

2 Bathrooms

942 SF

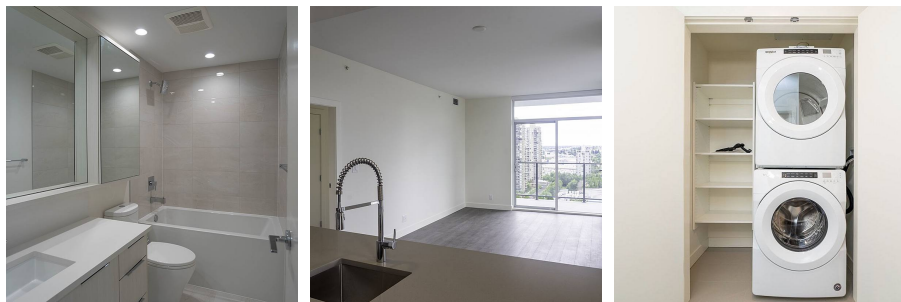
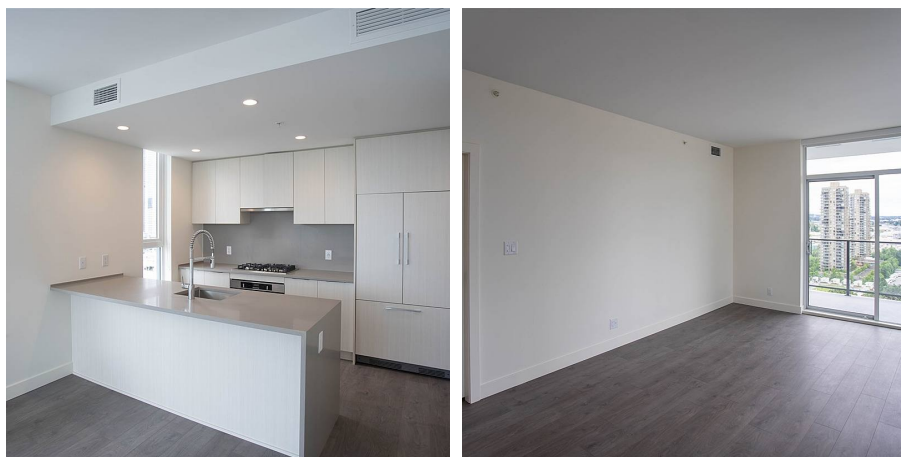
\$505.12 Maintenance Fees

FEATURES

Year Built: 2020

Views: MOUNTAIN/CITY VIEW

Listed By: Pacific Evergreen Realty Ltd.



rennie