

# 612 20325 85 Avenue, Langley

\$589,700

**2 BEDROOM**

**Livable: 1061 sq.ft.**  
Suite 883 sq.ft. + Solarium/deck 178 sq.ft.

- Solarium Balcony**
- Air Conditioning**
- Extra Wide 2 Car Parking**
- Huge Storage Garage**
- Natural Gas Range/BBQ**

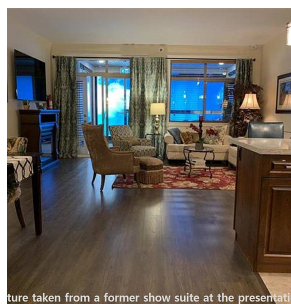
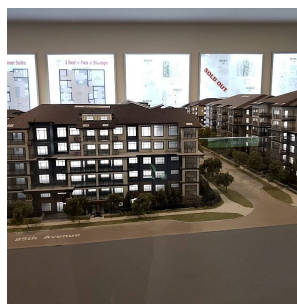
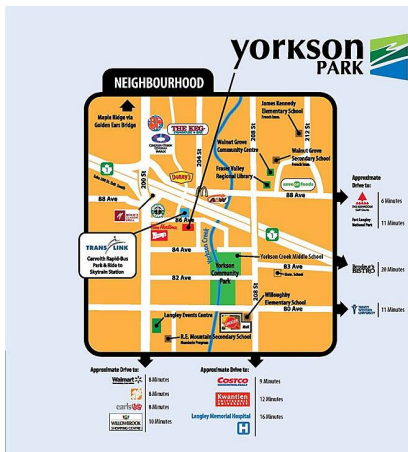
TOP PENTHOUSE / SouthEast Corner unit with open view / Solarium / Air Conditioning / This 2bed + 2 bath suite has it all, a square glass solarium w/gas connection for BBQ & year round entertaining. Gourmet Samsung appliances including gas 5 burner cooktop, double oven, quartz countertops, heated tile floors in bathrooms, energy efficient heat pump/AC (each bedroom and living room), Wood closet system and a sound dampening acoustic pkg. laminate floor is in throughout this unit. 2 U/G parking stalls with private storage locker (with electrical outlet capable of charging car).

### KEY INFORMATION

MLS® R2466202  
Residential Attached  
Walnut Grove  
2 Bedrooms  
1 Bathroom  
1,061 SF  
\$206.37 Maintenance Fees

### FEATURES

Year Built: 2021  
Views: UNOBSTRUCTED SOUTH VIEW  
Listed By: Hanna Realty Ltd.



Picture taken from a former show suite at the presentation

rennie