

# 1806 Sw Marine Drive, Vancouver

\$4,580,000



BC Assessment value \$4.421 Million. RARELY AVAILABLE OVER 30000 sq ft (100 x 315.5) lot with over 4000 sq ft living space and beautiful mature gardens in the Heart of Vancouver West side! Main floor ideal for large scale entertaining plus two bedrooms. 3 large bedrooms in upstairs with 2 baths. Private SOUTHWEST EXPOSURE GARDEN offers you large family entertainment area and outdoor pool all with privacy. Minutes to BC's top public schools Dr. R.E. McKechine Elem & Magee Secondary, golf course, saffeway, restaurants, banks, public library, etc. Close to top private schools: Crofton, York House, St. George's, West Point Grey Academy, Vancouver Montessori School. Don't miss it!

## KEY INFORMATION

MLS® R2464800

Residential Detached

Southlands

5 Bedrooms

5 Bathrooms

4,190 SF

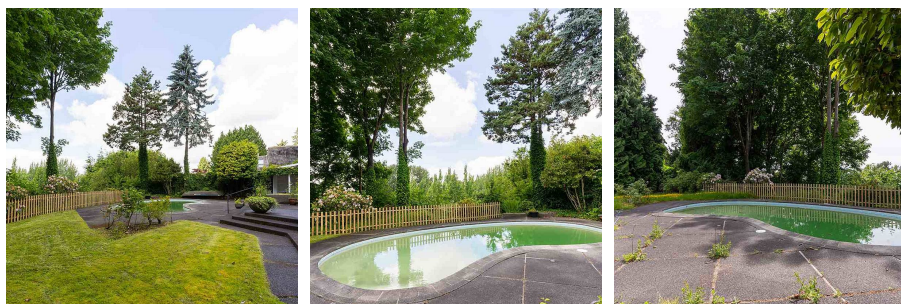
31,537 SF Lot

## FEATURES

Year Built: 1927

Views: SOUTHWEST

Listed By: Royal Pacific Realty Corp.



rennie