

11410 Loughren Drive, Surrey

\$849,000



This Beautiful Basement Home in Birdland, has a Large 1 bedroom Basement suite, in a cul-de-sac in quiet neighborhood. Close to shopping, transit and easy access to Port Mann Bridge. This home has a newer roof, new furnace. Double glazed bay windows, which allows for natural light to enter. Updated kitchen with a large eating area, this home has great hardwood floors.

KEY INFORMATION

MLS® R2464103

Residential Detached

Bolivar Heights

4 Bedrooms

2 Bathrooms

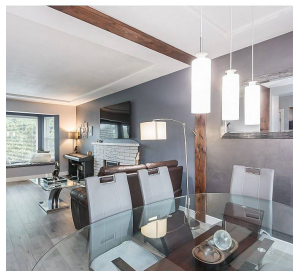
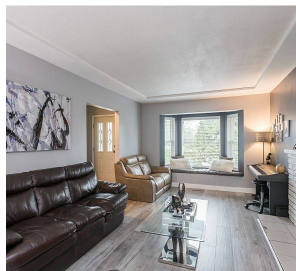
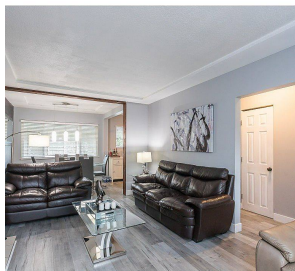
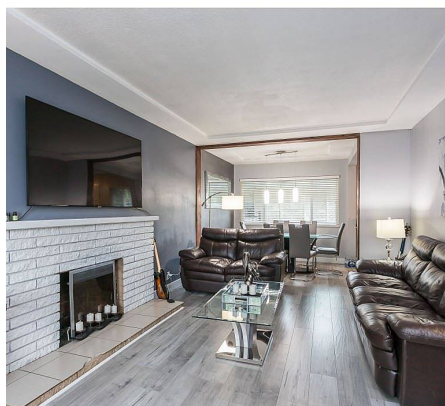
2,080 SF

7,824 SF Lot

FEATURES

Year Built: 1958

Listed By: Multiple Realty Ltd.



rennie