

2503 9521 Cardston Court, Burnaby

\$849,000



Beautifully renovated Penthouse with over 1700 sqft of luxury living space and incredible 270-degree views of mountains, city and the mighty Fraser River! Extend your living space with another 492 sqft of glass canopy covered decks. Whether you need additional space for parents, students or office space to work from home this property has a well-designed layout that can accommodate all. How about a wood burning fireplace? No need to travel to the cabin. Centrally located with shopping, restaurants, recreation and transit all close by. Concorde Place has gone through extensive upgrades and maintenance over the last few years to ensure that the owner's investment is secure. Watch our 4K film to learn more about this exciting property!

KEY INFORMATION

MLS® R2462369

Residential Attached

Government Road

3 Bedrooms

3 Bathrooms

1,729 SF

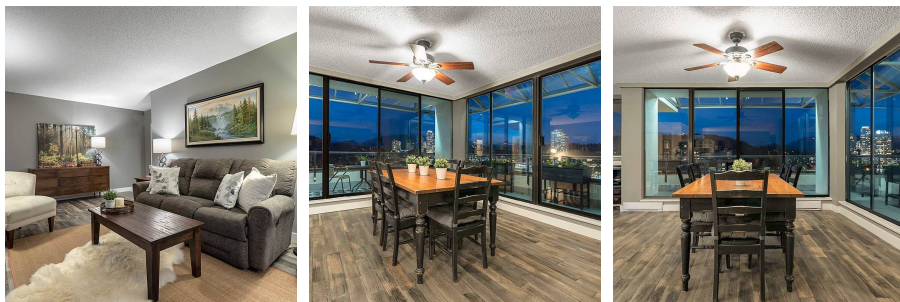
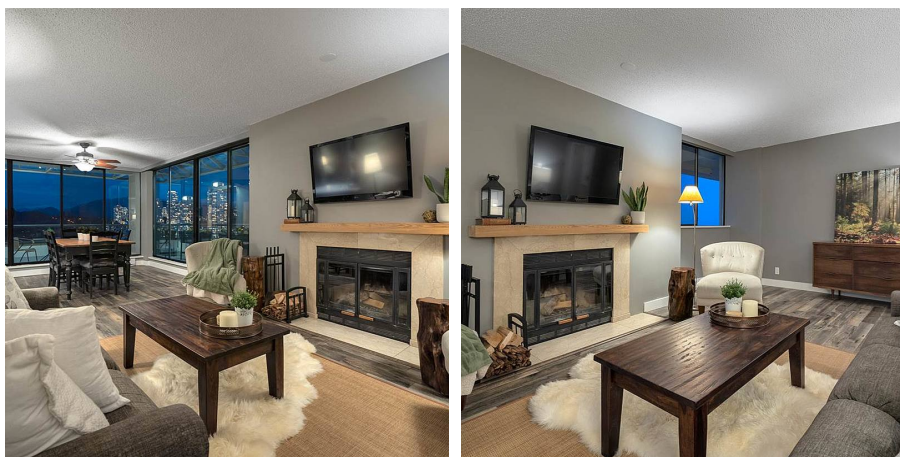
\$796.73 Maintenance Fees

FEATURES

Year Built: 1983

Views: NUMEROUS MTNS INCL MT BAKER

Listed By: RE/MAX All Points Realty



rennie