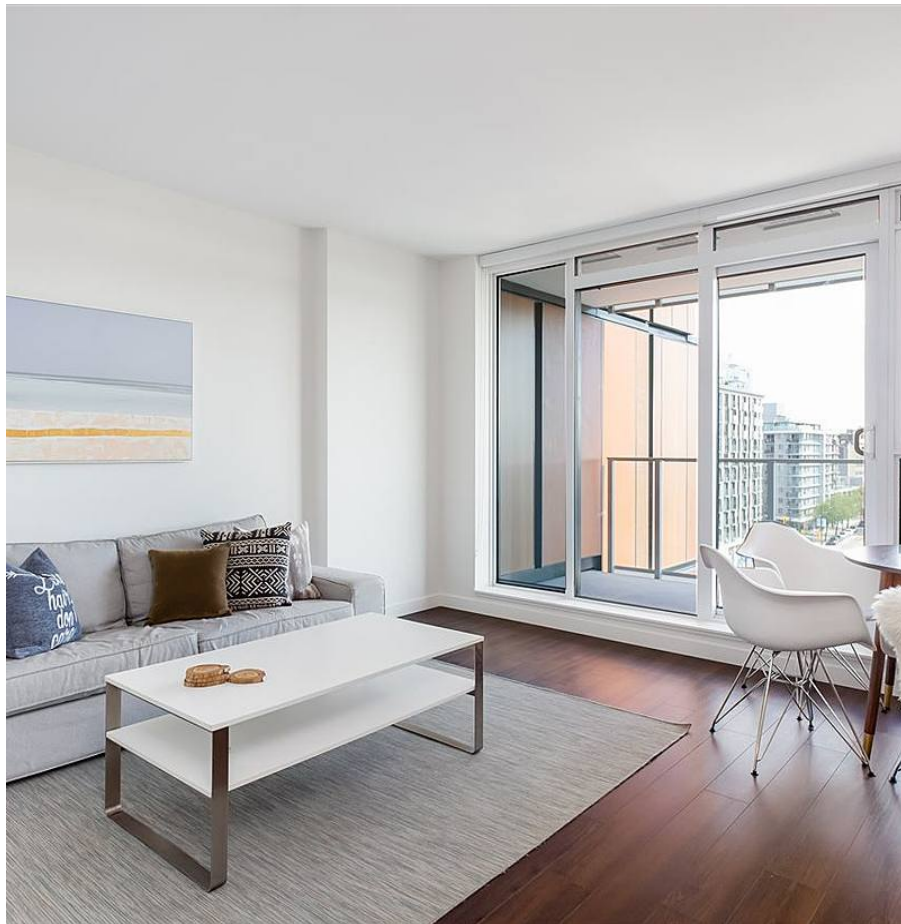


1006 285 E 10th Avenue, Vancouver

\$649,900



The Independent by Rize is the tallest concrete tower in the Mount Pleasant area! Amazing amenities here include a gym, party room, guest suite, BBQ space, meeting rooms, rooftop garden, and billiards room. Centrally located with Nesters, Thierry, Starbucks, local coffee shops, transit + False Creek creek seawall close by! 1006 features a sunny south facing outlook with unobstructed views + an efficient 1+ flex floorplan. 1 year new (2019 completion), this home is lightly used + in near mint condition. The home includes rize modular closet systems + cooling/AC for maximum comfort. Upgraded glass shower door, Couch pictured, 1 XLARGE parking + 1 storage lockers included in price. Rarely available, don't miss this one! Book your private appointments today!! ****All FURNITURE INCLUDED**

KEY INFORMATION

MLS® R2461789

Residential Attached

Mount Pleasant

1 Bedroom

1 Bathroom

583 SF

\$246.97 Maintenance Fees

FEATURES

Year Built: 2019

Views: SOUTH. MT PLEASANT, YVR

Listed By: Macdonald Realty Westmar

