

# 10610 141 Street, Surrey

\$989,888



First time on the market in 40 Years, Come take a look at this 4 Bedroom 2 bath home that sits on just over an 8000 sqft corner lot. Great central location close to Transit, Central City and the Skytrain station. Well maintained home with newer roof and detached workshop and fully fenced yard. Call today for your Private showing!

## KEY INFORMATION

MLS® R2461175

Residential Detached

Whalley

4 Bedrooms

2 Bathrooms

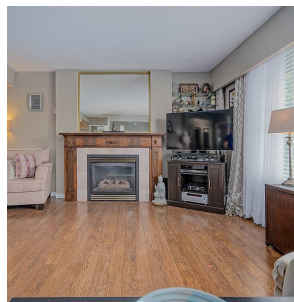
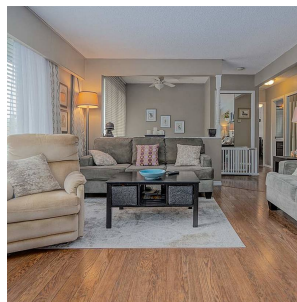
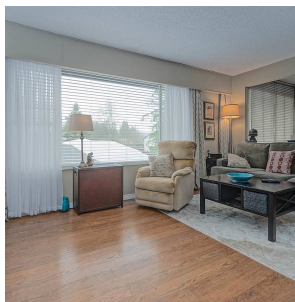
1,920 SF

8,029 SF Lot

## FEATURES

Year Built: 1965

Listed By: Homelife Glenayre Realty Company Ltd.



rennie