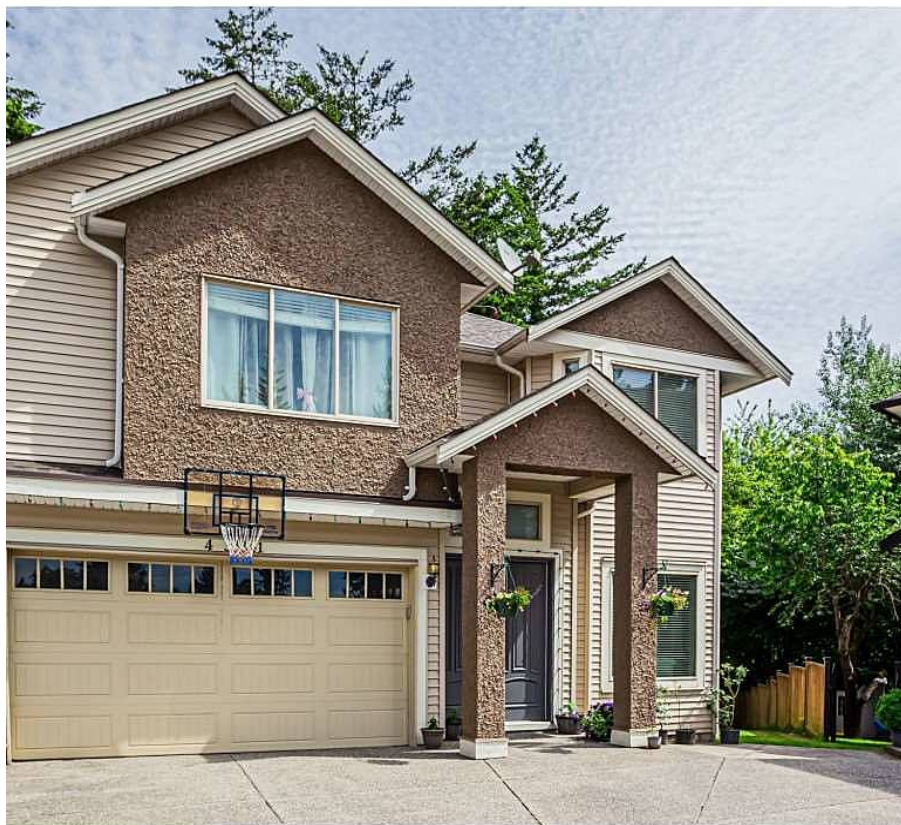


# 4 33341 Hawthorne Avenue, Abbotsford

\$895,000



A beautiful custom built home in a central cul-de-sac location. This 3100+ sqft home is the perfect size for the family. The main floor boasts a great room plan with a gourmet kitchen, open family, dining, and nook area all with 10 foot ceilings. Also above you will find 4 spacious bedrooms and 3 full baths with 2 being ensuites. Below you have a huge recroom, office area, and powder room, & a 2 bedroom in-law suite. Lots of parking, big backyard with tons of greenery great for entertaining. The proximity to all amenities including the University of the Fraser Valley, and easy highway access make this a promising area to buy. Call today to make your appointment!

## KEY INFORMATION

MLS® R2458855

Residential Detached

Poplar

6 Bedrooms

5 Bathrooms

3,157 SF

9,231 SF Lot

## FEATURES

Year Built: 2010

Listed By: Homelife Glenayre Realty Company Ltd.



rennie