

# 107 32823 Landeau Place, Abbotsford

\$239,900



Your new home at Park Place awaits! Gorgeous 55+, amazing ground floor, 2 bed and 2 bath, over 1100 sq ft west facing home with a beautiful garden patio. Centrally located and just steps to shopping, coffee shops, restaurants, 7 Oaks Mall, and Mill Lake. Featuring great amenities including; an indoor pool and hot tub, hot sauna, games room, Handy man's workshop, and Hot Water On Demand. Extremely well taken care of home with renovations (new bathrooms, floors, paint, etc). No pets or rentals. Call to schedule your private tour.

## KEY INFORMATION

MLS® R2458810

Residential Attached

Central Abbotsford

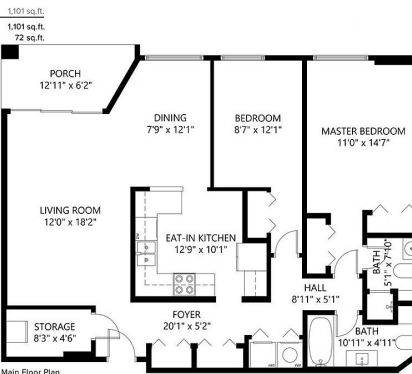
2 Bedrooms

2 Bathrooms

1,101 SF

\$422.87 Maintenance Fees

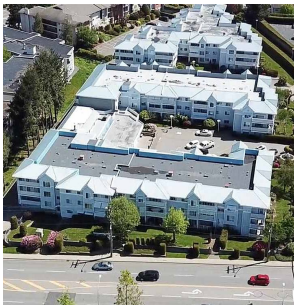
107 32823 Landeau Pl  
Abbotsford



## FEATURES

Year Built: 1986

Listed By: eXp Realty



rennie