

36 1751 Paddock Drive, Coquitlam

\$938,800



One of a kind 2,688 sqft Duplex style townhouse in desired Westwood Plateau area. Large backyard for year round entertainment and kids trampoline. Beautiful view over looking the city & Mountain Baker. Updated bathroom, quartz countertop with rounded edge in kitchen & S/S/ appliances. New Rheem Energy efficient Hot Water tank 2019, updated LED lighting and touch button switch, updated digital thermostats. Side by Side attached garage in the front and space for some storage area. This lovely place for your family won't last long. Open House Aug. 23 Sun. 2-4PM (cancelled.)

KEY INFORMATION

MLS® R2458386

Residential Attached

Westwood Plateau

4 Bedrooms

4 Bathrooms

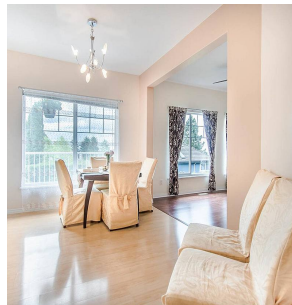
2,688 SF

FEATURES

Year Built: 1999

Views: City & Mountain

Listed By: RE/MAX Crest Realty



rennie