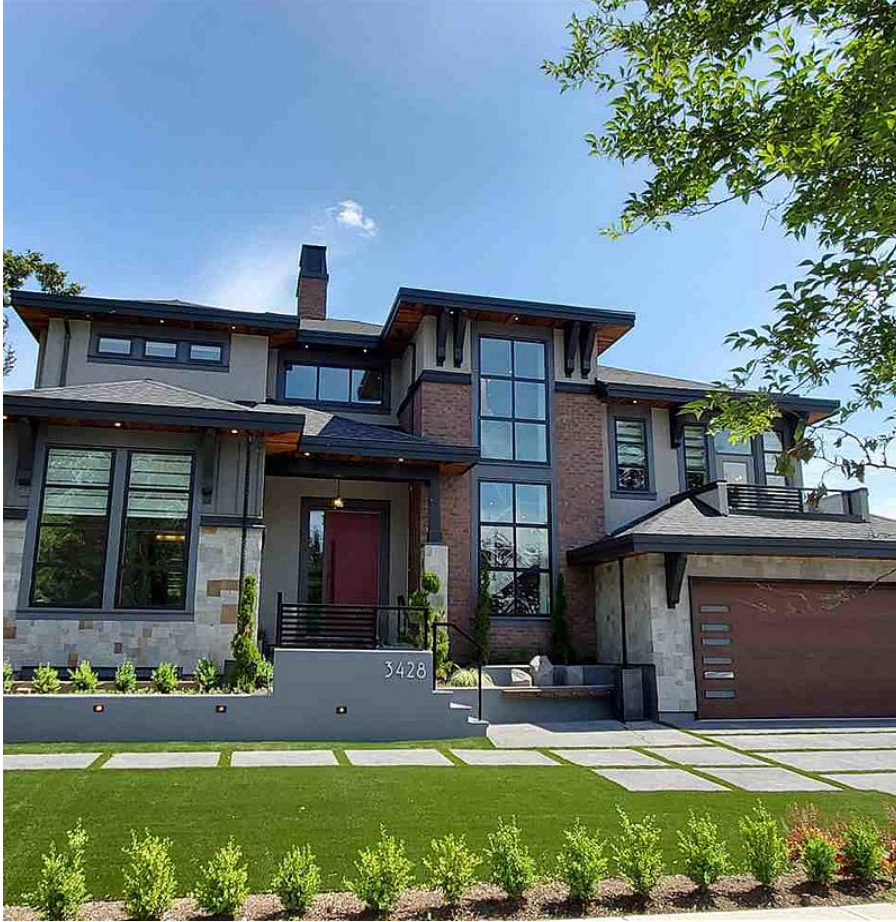


# 3428 155 Street, Surrey

\$2,780,000



"Le Rose" Morgan Creek's latest, Luxury, family / executive subdivision. Magnificently crafted by Lottery Home Builder "Red Tree Creative Homes", this gorgeous, 2 storey and full walk out basement, offers over 6100 sq ft, 6 or 7 bedroom, 9 bath, with creative, stunning features from imported Italian custom cabinetry to ultra modern, lavish walk-in master closet, to designer library & den. Truly a luxury masterpiece that must be viewed to be appreciated. Across from City Park, close to exceptional schools (Morgan Creek Elementary & South Ridge Private School).

## KEY INFORMATION

MLS® R2454310

Residential Detached

Morgan Creek

6 Bedrooms

9 Bathrooms

6,147 SF

9,188 SF Lot

## FEATURES

Year Built: 2019

Listed By: Sutton Group-West Coast Realty (Surrey/24)

