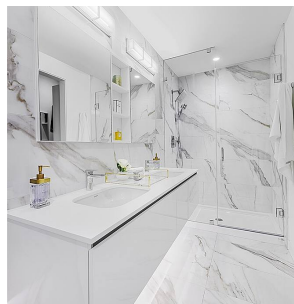
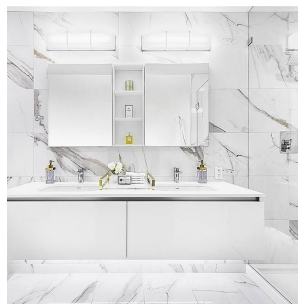
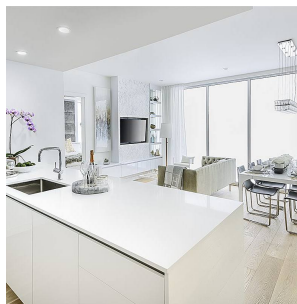
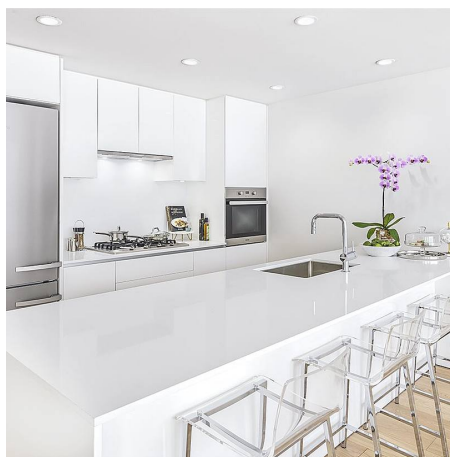


1102 5788 Gilbert Road, Richmond

\$1,599,900



Richmond's most iconic building, CASCADE CITY by Landa Global is designed by renowned Rafii Architects & Arno Matis. Bright, open corner layout 3 BED + DEN with plenty of windows for natural light, OVER 700 sf wrap-around SUNDECK, A/C, Miele appliance package + engineered hardwood floors throughout. Surrounded by restaurants, shops and services. Richmond Centre, Aberdeen Centre + YVR airport all a short drive away! Easy to get downtown w/Canada Line nearby. Amenities incl. exclusive 3,000sf double-height fitness centre, guest suite, multi-functional club lounge, lushly landscaped 25,000sf podium-level outdoor space + much more! Call us today to find out about our latest Promotion! Includes 2 Parking + 1 Locker!

KEY INFORMATION

MLS® R2453808

Residential Attached

Granville

3 Bedrooms

3 Bathrooms

1,372 SF

\$603.68 Maintenance Fees

FEATURES

Year Built: 2021

Views: CITY

Listed By: rennie & associates realty ltd.



Jessica Lozada PREC*
604.360.0025
jlozada@rennie.com
rennie.com/jessicalozada

rennie