

# 1712 8033 Saba Road, Richmond

\$748,000



Regent International's "Paloma II" concrete high-rise in the heart of Richmond. Total 921 sq ft with 2 bedroom plus Den / 2 full bath, Bright & spacious open concept living, dining, & kitchen area. Kitchen features stainless steel appliances, gas cooktop, & quartz counter tops. In-suite storage with stacking laundry, new painting, new carpet, one parking and one locker. Pets & rental friendly. Amenities include party lounge, gym, steam room, & garden. Steps to Brighthouse Station (Canada Line). Richmond Center Mall, restaurants & Public Market.

## KEY INFORMATION

MLS® R2453574

Residential Attached

Brighthouse

2 Bedrooms

2 Bathrooms

921 SF

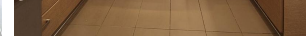
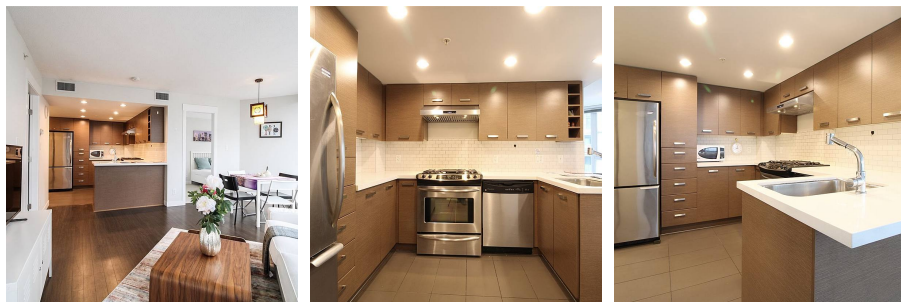
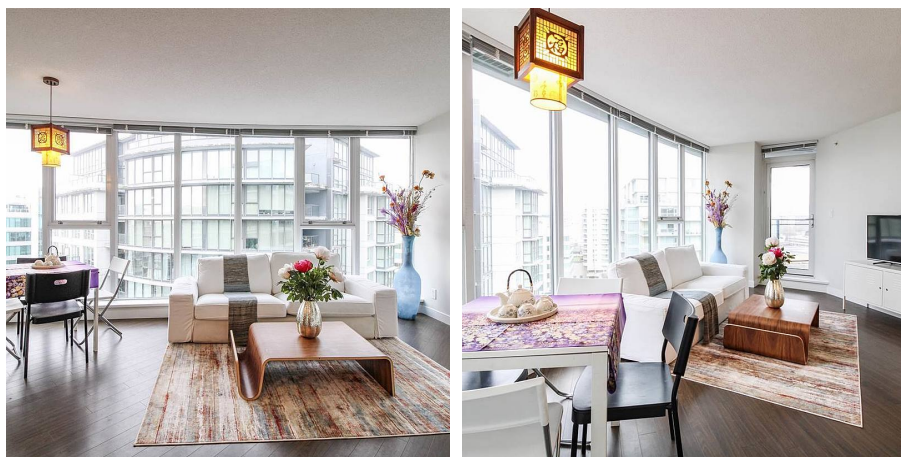
\$411.15 Maintenance Fees

## FEATURES

Year Built: 2010

Views: CITY AND MOUNTAIN VIEW

Listed By: Royal Pacific Realty Corp.



rennie