

# 428 Mariners Way, Mayne Island

\$1,295,000



Always wanted a rural acreage on the Gulf Islands? Look no further! This beautiful 10 acre fenced & cross-fenced hobby farm features an apple orchard, market vegetable garden, greenhouse, berry patches, fruit trees, flower gardens, pond & a 4 bay shop/barn with studio & kitchen above. This 2600 sqft country/farm style home boasts hardwood floors, large kitchen with a Wolf dual fuel stove & other top-of-the line appliances. Cozy up in the living room near the wood burning fireplace which can supply heat to the entirety of the house. The main floor includes a laundry/mud room, 3 pce bthrm & den... great for an office, tv room or even a 3rd bdrm. You'll find 2 spacious bdrms upstairs including the master & a spa inspired bthrm, plus a plethora of storage!

## KEY INFORMATION

MLS® R2453171

Residential Detached

Mayne Island

2 Bedrooms

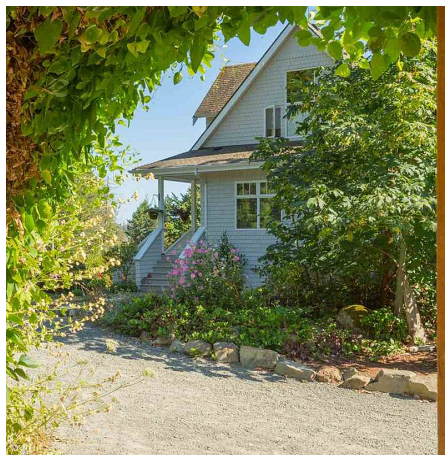
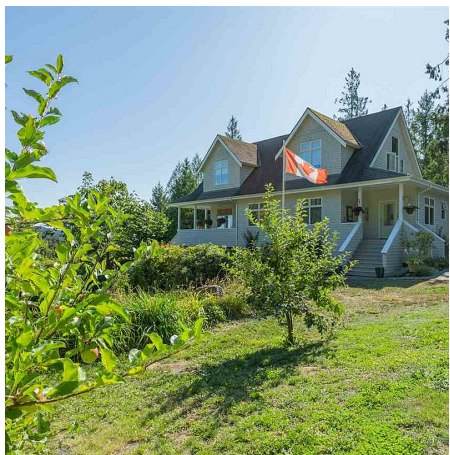
2 Bathrooms

2,606 SF

## FEATURES

Year Built: 2004

Listed By: RE/MAX Mayne-Pender



rennie