

# 154 8600 Lansdowne Road, Richmond

\$479,000



In case you missed this one in Tiffany Gardens, here's your chance! If you want a quiet, well-maintained building that is adult-oriented with a minimum of 19+, no pets, no rentals with a fabulous location in the heart of Richmond, this is it! Floor to ceiling windows in this 1124sf, 2 bedrooms, 2 bath corner unit, facing northwest with a gas fireplace and 2 balconies. A queen size bed fits perfectly in the second bedroom. Laminate floors with full size washer and dryer. Perfect for people downsizing or a couple who wants more space. Lots of potential with your design ideas or just move in. Bike room with workshop and a lounge. Literally, steps to Lansdowne Mall, T&T, KPU, transit, Canada Line and restaurants. Visit 3D tour: <https://my.matterport.com/show/?m=e77BBkFh5aq>

## KEY INFORMATION

MLS® R2453068

Residential Attached

Brighthouse

2 Bedrooms

2 Bathrooms

1,124 SF

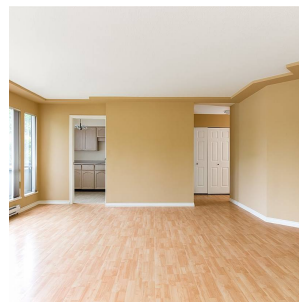
\$410.74 Maintenance Fees

## FEATURES

Year Built: 1988

Views: PARTIAL MOUNTAINS

Listed By: RE/MAX Westcoast



rennie