

1007 1288 Marinaside Crescent, Vancouver

\$2,398,000



WATER FRONT WATER FRONT -- VIEW VIEW VIEW! Rare find opportunity to own this unique WATER FRONT building penthouse at CRESTMARK, best location of Yaletown, just steps to great restaurants, seawall and Canada Line. Luxurious 2 levels penthouse with 3 bedrooms and 3 full bathrooms, 1694 sq ft, 9' ceilings, marble floor entry, granite counter-tops, skylights, large master bedroom with walk-in closet, and 2 secure parking. You can enjoy the breathtaking waterfront view once you enter the home, amazing water view for every room and offer huge wrap-around sundeck, Crestmark has well management and full amenities: concierge, indoor pool, gym, and hot tub. **ONE OF THE MOST DESIRED NEIGHBORHOODS -- A Must See!!**

KEY INFORMATION

MLS® R2451150

Residential Attached

Yaletown

3 Bedrooms

3 Bathrooms

1,694 SF

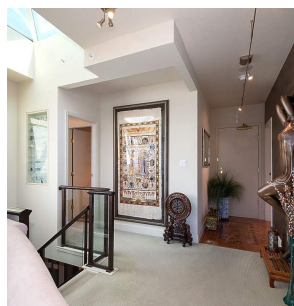
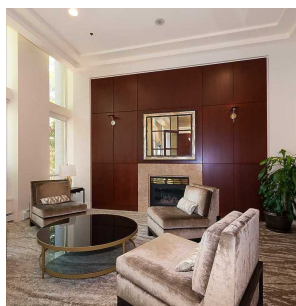
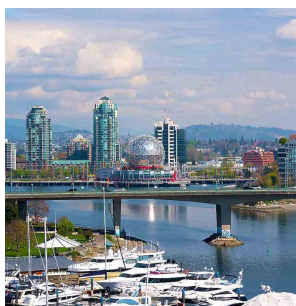
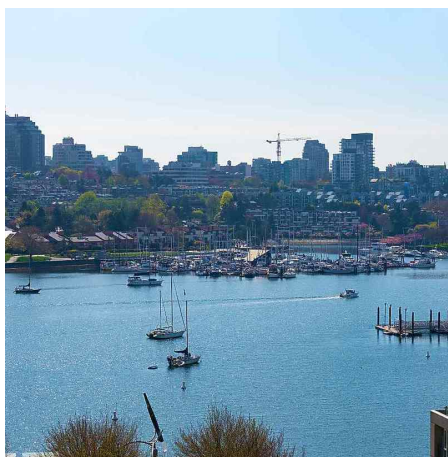
\$1,254.00 Maintenance Fees

FEATURES

Year Built: 1997

Views: Partial Water

Listed By: Sutton Group-West Coast Realty



rennie