

312 2277 McCallum Road, Abbotsford

\$229,000



The best of the best on the top floor. Enjoy the professionally remodeled kitchen with quartz counter tops, stainless steel appliances and modern flooring. This spacious open floor plan home is over 1000 square feet with a large covered deck to enjoy the view, and a large dining room and living room great for entertaining. This centrally located home has in suite laundry and is easily accessible to all amenities including the all new McCallum Junction shopping center, transit, medical facilities and easy freeway access. Alameda Court (55 plus) is a very well run and maintained building! Call to view today!

KEY INFORMATION

MLS® R2445005

Residential Attached

Central Abbotsford

2 Bedrooms

1 Bathroom

1,010 SF

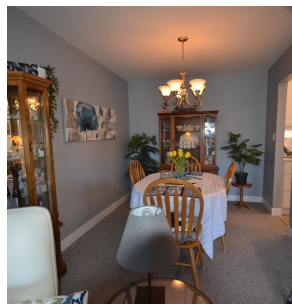
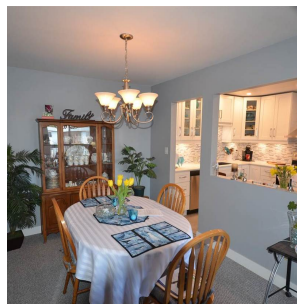
\$274.50 Maintenance Fees

FEATURES

Year Built: 1982

Views: Mountain/Trees

Listed By: RE/MAX Treeland Realty



rennie