

48551 Prairie Central Road, Chilliwack

\$1,250,000



Escape to the country! Situated on 2 flat acres and surrounded by farmland and great views. Well maintained 2 bedroom 1 bath older home that has had many upgrades. Has a detached garage/workshop and also a 20' x 26' barn for your horses or other animals, lots of room for your toys. Easy highway access and minutes to shopping and amenities.

KEY INFORMATION

MLS® R2442948

Residential Detached

Chilliwack

2 Bedrooms

1 Bathroom

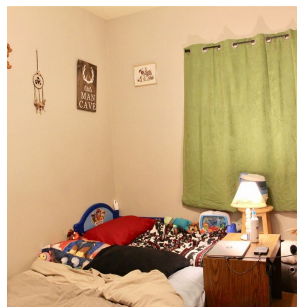
1,024 SF

FEATURES

Year Built: 1953

Views: MOUNTAINS & FARMLAND

Listed By: RE/MAX Nyda Realty Inc.



rennie