

1910 E 19th Avenue, Vancouver

\$1,438,000



Unbeatable location directly across from Trout Lake, with schools, transit and, Commercial Drive at your doorstep. Great design on 3 levels with kitchen, dining and living and a powder room all on one level. Up are 2 very nice sized bedrooms with a full bath and on the 3rd level a beautiful Master bedroom with ensuite, radiant heat, hot water on demand plus wide plank engineered floors. The kitchen is well-designed with an island, high end European appliances, soft-close cupboards and doors and quartz countertops and smart wiring. The home is bright and spacious with direct access to the deck and private yard and garage. This really feels like a single family home. 2-5-10 year warranty.

KEY INFORMATION

MLS® R2426619

Residential Attached

Grandview Woodland

3 Bedrooms

4 Bathrooms

1,387 SF

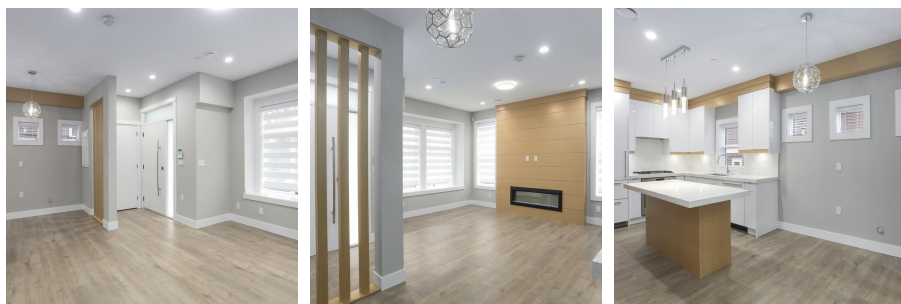
3,690 SF Lot

FEATURES

Year Built: 2019

Views: Trout Lake and Mount Robson

Listed By: Sutton Group-West Coast Realty



rennie