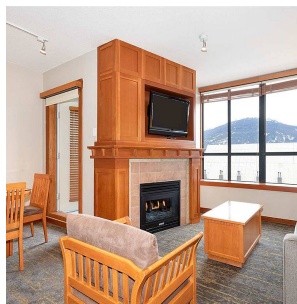
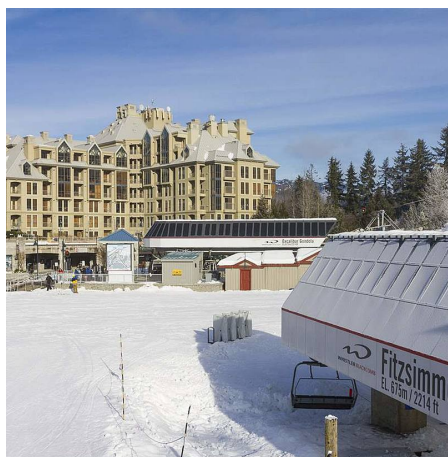


# 608 4320 Sundial Crescent, Whistler

\$459,900



Whistler Mountain lays at your feet at the Pan Pacific Mountainside, ideally situated at the base of both gondolas. Prime ski-in/ski-out access is ideal for the snow enthusiast, or unwind by the pool overlooking the vibrant village for a more relaxed Whistler experience. This well-appointed one bedroom features a full kitchen, dining area, 3 piece bathroom with soaker tub, and cozy fireplace, making it a perfect retreat while still creating great rental revenues. Take advantage of the hotel facilities including a 24 hour concierge service, outdoor heated pool, hot tubs, shops and the Dubh Linn Gate Pub and Restaurant. Phase II zoning allows for up to 56 days of personal usage a year.

## KEY INFORMATION

MLS® R2425269

Residential Attached

Whistler Village

1 Bedroom

1 Bathroom

432 SF

\$608.00 Maintenance Fees

## FEATURES

Year Built: 1997

Views: Mountains

Listed By: Whistler Real Estate Company Limited

rennie