

# 810 2799 Yew Street, Vancouver

\$659,900



Unique, loft inspired suite with 15' ceilings located on premier top (8th) floor in the replica of the original O'Keefe Brewery architectural tower. Lots of natural light, south/east open sky tree-top views over lower Shaughnessy. Features include full kitchen w/pantry, living/dining area w/gas fireplace, bedroom w/walk-in closet, spacious bathroom w/linen closet, plus in-suite-laundry. Own your freehold apartment in the desirable, active, young-at-heart, ages 60+ independent living community of Tapestry at Arbutus Walk. Enjoy access to a wide range of services including weekly housekeeping, gourmet dining, spa/salon, fitness centre, rooftop terrace, putting green, cinema, pub, library & concierge, in a convenient central Kitsilano location. Covid protocols in place; view by appointment.

## KEY INFORMATION

MLS® R2425062

Residential Attached

Kitsilano

1 Bedroom

1 Bathroom

704 SF

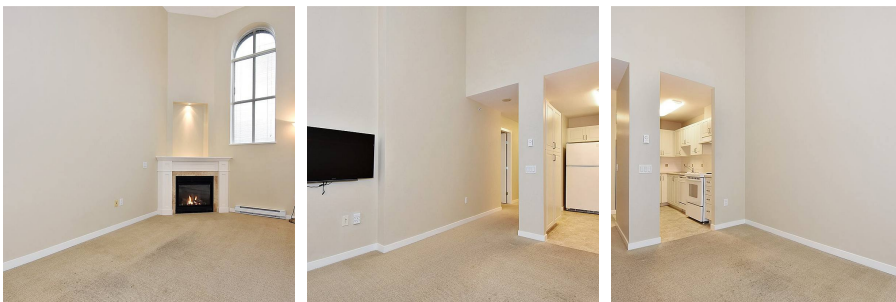
\$313.82 Maintenance Fees

## FEATURES

Year Built: 2003

Views: SOUTH EAST OPEN SKY / TREETOPS

Listed By: Dexter Realty



rennie