

17972 98a Avenue, Surrey

\$918,000



Build your 8,000 SQFT dream home on a prime 15,000+SQFT lot (0.35acre) at the end of a beautiful, quiet Fraser Heights/Abbey cul-de-sac surrounded by beautiful homes with mountain and valley views. Fully serviced, cleared and ready to build. You'll find yourself near Fraser Heights Secondary and Bothwell Elementary school catchments. Tynehead Park & Pacific Academy private school nearby and a future park just around the corner. If you are looking for a large lot on a posh mature cul-de-sac with a huge neighbourhood upside, look no further. Full building plans available.

KEY INFORMATION

MLS® R2414790

Land Only

Fraser Heights

0 Bedrooms

0 Bathrooms

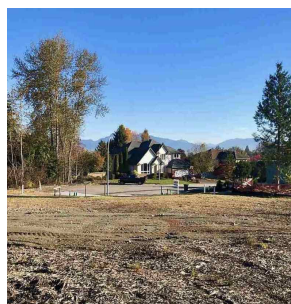
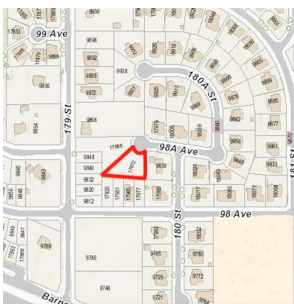
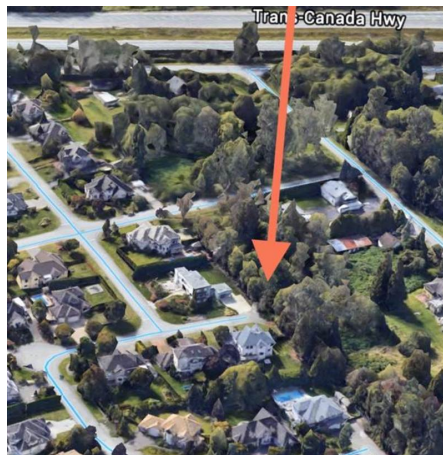
0 SF

15,088 SF Lot

FEATURES

Views: Mountain & Valley

Listed By: rennie & associates realty ltd.



Randy Rinaldo
604.781.4995
rrinaldo@rennie.com
rennie.com/randyrinaldo

rennie