

1907 988 Quayside Drive, New Westminster

\$529,000



GREAT INVESTMENT opportunity! This **BRAND NEW** waterfront home by Bosa in one of New Westminster's revitalized neighborhoods is currently tenanted. Functional floorplan **PLUS** over 100sf balcony with no wasted space. You can double the size of dining and living areas by easily sliding away the bedroom doors. Queen bed and sofa included. The kitchen island can transform into a long table for dining, comfortably seating 8 people. Unit comes with 1 parking & 1 locker. Whether you to enjoy some private time or host a party at home, this unit will fulfil your needs! At your door front is the Fraser River and the Esplanade Boardwalk. Skytrain is only steps from your door. 25 minutes from downtown Vancouver, 15 minutes from Metrotown and 10 minutes from SFU at Surrey. Call for your privacy showing.

KEY INFORMATION

MLS® R2364593

Residential Attached

Quay

1 Bedroom

1 Bathroom

532 SF

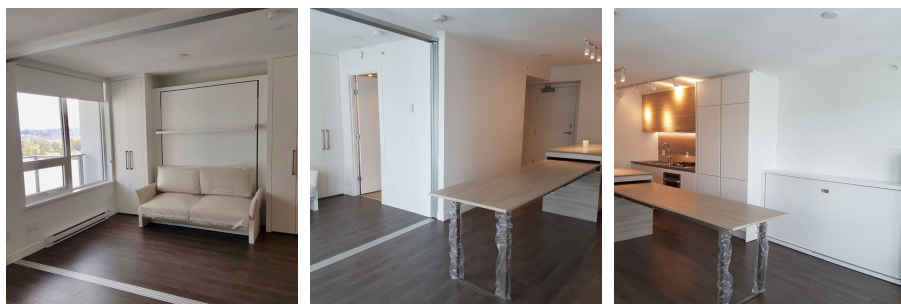
\$205.95 Maintenance Fees

FEATURES

Year Built: 2019

Views: RIVER

Listed By: RE/MAX Crest Realty



rennie