

1 46248 Kermode Crescent, Sardis

\$679,900



There is nothing you won't love about this distinctive home that has a huge park like backyard & backs onto a creek. This stylish 6 bed, 4 bth, 2 storey w/ bsmt home has tons of room for the family and a 2 bedroom in-law suite. Beautifully finished, this upscale family home has a desired open floor plan that boasts wall to wall windows. Features include stylish ceiling height kitchen cabinets, large granite island, S/S appliances, hardwood on the main, rock fireplace, new carpet & fresh paint throughout. Walk out to the backyard from the main level & make memories entertaining on the deck and watching the kids play. Just steps away from the elementary school, walking trails and amenities. Like new & move in ready.

KEY INFORMATION

MLS® R2205430

Residential Detached

Chilliwack

6 Bedrooms

4 Bathrooms

2,748 SF

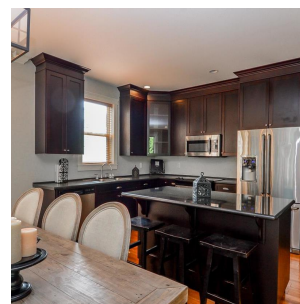
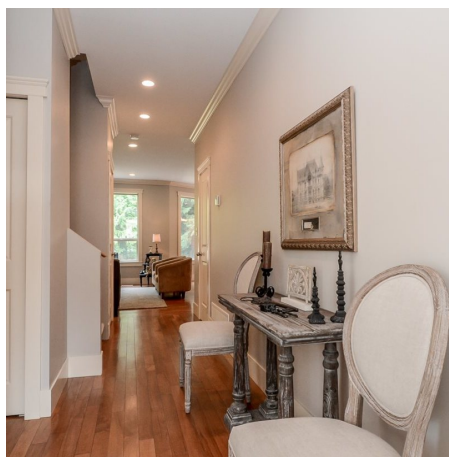
6,969 SF Lot

FEATURES

Year Built: 2006

Views: GREENSPACE

Listed By: rennie & associates realty ltd.



Clarke Mallory PREC*
604.316.9917
cmallory@rennie.com
rennie.com/clarkemallory



Kim Mallory PREC*
604.316.3635
kmallory@rennie.com
rennie.com/kimmallory

rennie