

1803 - 9808 King George Boulevard, Surrey

\$596,900



Located in the emerging Surrey City Centre, King George Hub is one of the most anticipated mixed-use communities in Metro Vancouver. Its location next to the Expo Line's King George Station provides residents with a dynamic transit-oriented neighbourhood. With 434 homes in the first offering, King George Hub offers 1 and 2 bedroom homes starting from \$299,900. Along with parks, nearby cafes, shops and services at your doorstep, homeowners will also have access to outstanding private amenities including a rooftop terrace, fitness facility, a theatre room, lounge, games rooms and much more.

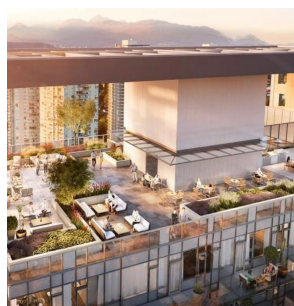
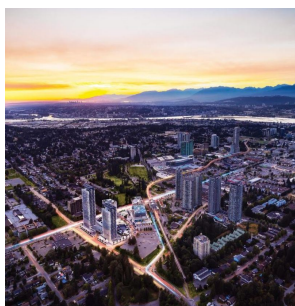
KEY INFORMATION

MLS®
Residential Attached
Whalley
2 Bedrooms
2 Bathrooms
809 SF



FEATURES

Year Built: 2021
Views: South-West
Listed By: rennie & associates realty ltd.



Andy Mah
604.779.9382
amah@rennie.com
rennie.com/andymah

rennie