

# 1733-35 Hie Avenue, Coquitlam

\$3,100,000



LAND ASSEMBLY INVESTMENT opportunity for BIG development SITE flat Location . DEVELOPERS INVESTORS. ALERT Possible for HIGH RISE Rezoning The site is designated for medium density - RM 2 and RM 3, permitting construction of multi-storey residential apartment buildings up to 8 levels NOW Gross floor area of 1.85 (buyer to verify). It is in the prime location of Maillardville, Coquitlam, just minutes away from Highway #1, Lougheed Highway, transit, supermarkets, shopping, and recreation.

## KEY INFORMATION

MLS® R2245637

Multifamily

Maillardville

12 Bedrooms

4 Bathrooms

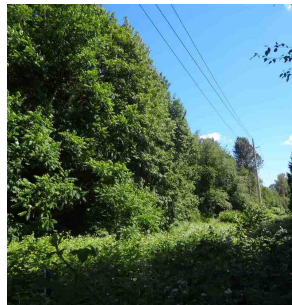
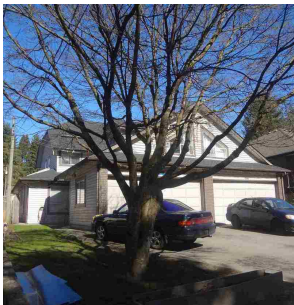
4,000 SF

8,052 SF Lot

## FEATURES

Year Built: 1972

Listed By: Magsen Realty Inc.



rennie